



NOISE-LOCK® SECURITY DOORS

MEET ALL U. S. GOVERNMENT SPECIFICATIONS

AVAILABLE FROM STOCK

3' x 7' (914 x 2134mm)
CLEAR OPENING

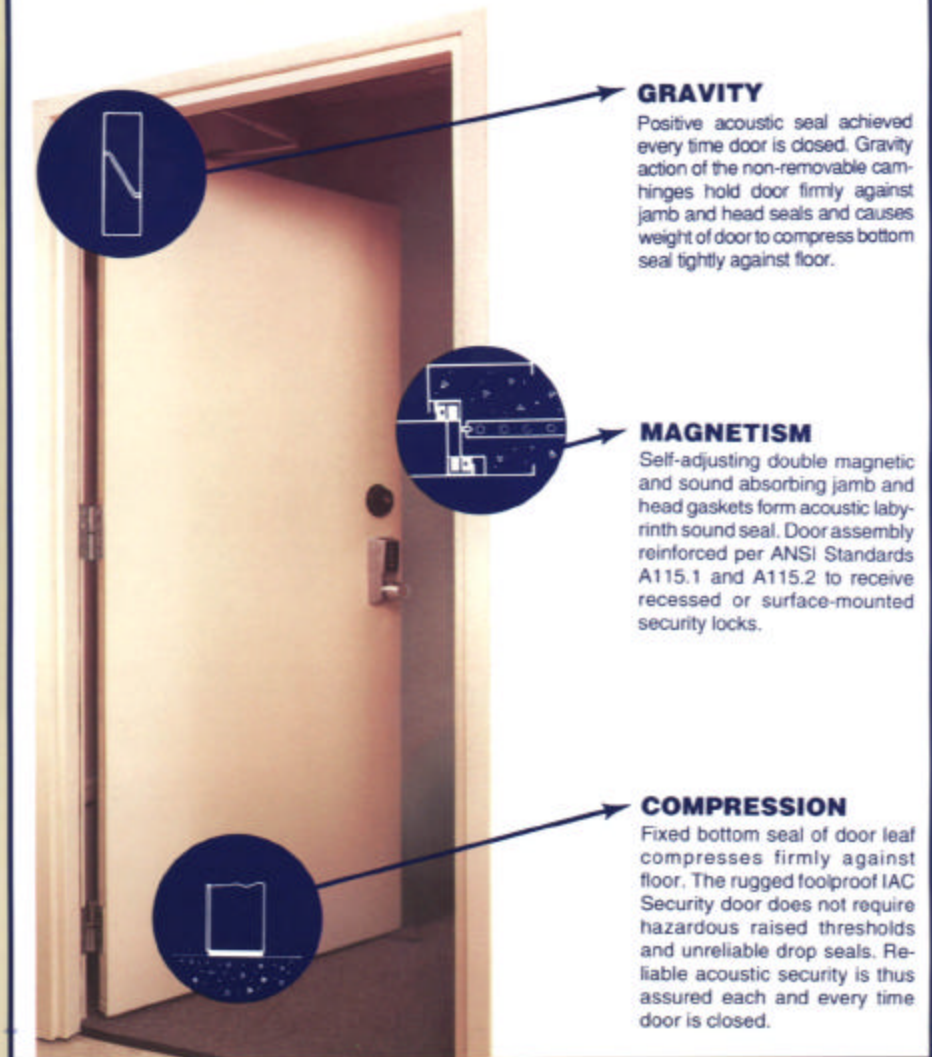
Typical Applications:
SCIF Entrance Doors
SCIF Emergency Exits
SAR Areas
TEMPEST/SCIF Areas

Applicable Specifications

DIAM 50-3
all sound groups
DCID 1/21.1
AFP 88-26
Acoustic Ratings STC 49-63
ASTM E90, E336, and E413
UL Fire Ratings
20 min. to 3 hours
NSA 73-2A and 65-6
NTISSI 7000

- IMMEDIATE SHIPMENT
- 3 SECURITY HINGES
- GROUP 1R LOCK
- 16 GA WELDED STEEL
- ACCESS CONTROL DEVICE
- HEAVY-DUTY CLOSER

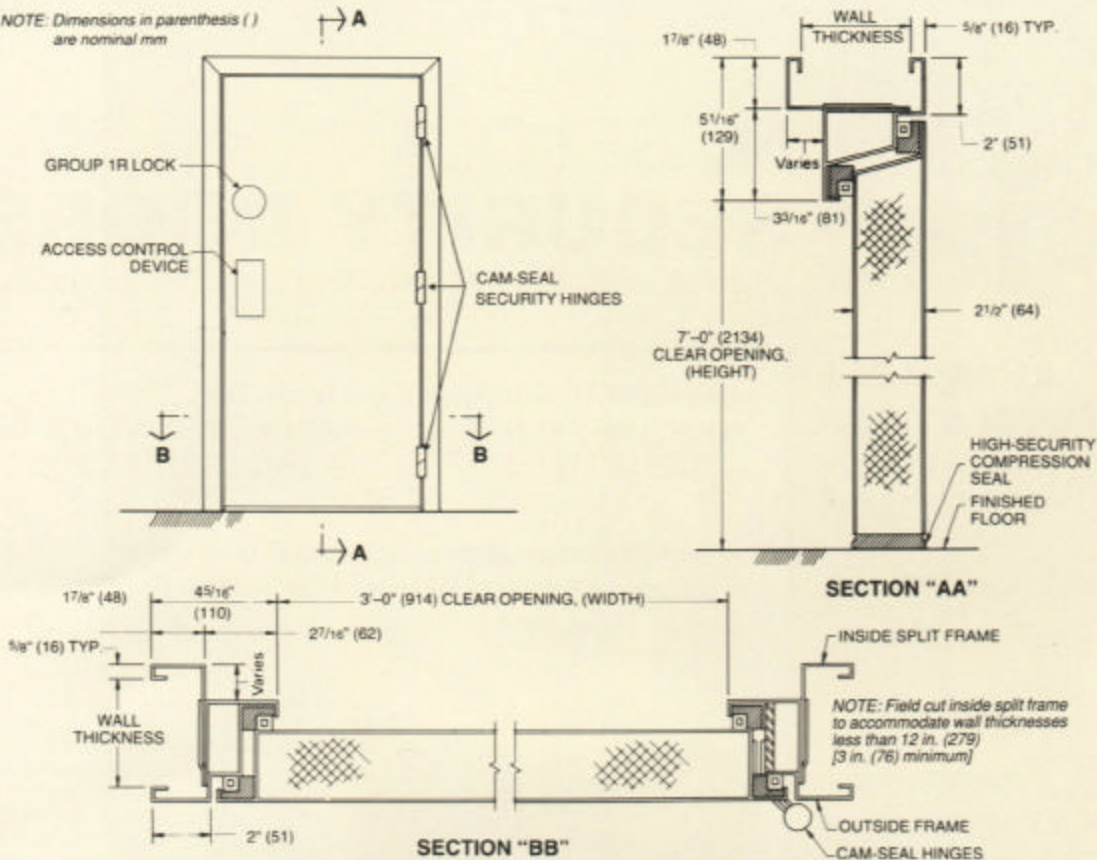
Engineered Combination of Acoustical, Mechanical, and Structural Features Assures High Field Noise Reduction, Proven in Thousands of Installations Since 1962.



INDUSTRIAL ACOUSTICS COMPANY

TYPICAL DETAILS
IAC STOCK NOISE-LOCK® SECURITY DOOR WITH SPLIT FRAME — FACTORY ASSEMBLED

NOTE: Dimensions in parenthesis () are nominal mm



IAC STOCK NOISE-LOCK® SECURITY DOOR SPECIFICATIONS

1. SOURCE

Door and frame assemblies complete with acoustic seals, security cam-lift hinges, and hardware shall be IAC Noise-Lock® as manufactured by Industrial Acoustics Company, Inc., 1160 Commerce Avenue, Bronx, New York 10462.

2. MATERIALS

a. Door leaf shall be 2 1/2 in. thick (64mm) fabricated from 16 ga (1.5mm) steel and filled with sound absorbing and damping elements.

b. Frame shall be fabricated from 16 ga (1.5mm) steel and furnished in two inside and outside mitered and welded pieces as shown on drawings.

c. Assembly and adjustment of single leaf door, frame, acoustic seals, and hinges shall take place at factory and entire unit shipped to job ready to install and operate.

d. Acoustic Seals — Side and head of door as well as frame shall receive two (2) sets of self-aligning magnetic-compression seals. Door to be held in closed position by magnetic force of perimeter seals. Acoustic labyrinth shall be created when door is in closed position. Bottom of door leaf shall contain continuous gravity-activated acoustic security seal which shall compress against floor as door is closed. Raised sills and threshold drop seals will not be permitted.

e. Hardware

1. **Sentry Security Hinges** : three (3) IAC cam-lift butt-type hinges (1 1/2 pair) finished in US 26-D satin chrome shall be supplied with each door leaf. Manufacturer to furnish laboratory test data showing hinges of identical design have been cycled more than 125,000 times while supporting door leaf weighing 350 lb (159kg) minimum.
2. **Heavy-Duty Adjustable door closer** shall be

supplied by the manufacturer.

3. **Locks** — Group 1R electro-mechanical lock and/or panic exit hardware as well as electrical or mechanical access devices to be installed by the manufacturer.

3. ACOUSTIC PERFORMANCE

At least 10 days prior to bidding manufacturer shall submit independent laboratory test data indicating a Sound Transmission Class rating of at least STC 49 (ASTM E 90). Field performance when installed in accordance with IAC instructions should be minimum Noise Isolation Class rating of NIC 45 (ASTM E336 in-to-out without averaging).

4. GUARANTEE

Acoustic Security Door materials and hardware shall be guaranteed against defective workmanship for one year from shipment.

All designs and specifications subject to change without notice. Metric dimensions nominal.

For Information on IAC's Complete Line of Noise-Lock Acoustic and Acoustic/RF Shielded Doors Request Bulletin 3.0501.



For Information on IAC Security Facilities Request:

SENTRY ACOUSTIC SERIES 50-3 SCIF Request Bulletin 6.0180

SENTRY RF/ACOUSTIC SHIELDED FACILITIES — SERIES 73-2A Request Bulletin 6.0182
 SERIES 65-6 Request Bulletin 6.0170

SENTRY STU III SECURE VOICE COMMUNICATION CENTERS Request Bulletin 6.0182

SECURITY SILENCERS FOR RF/ACOUSTIC SHIELDED ROOMS Request Bulletin SDS 23



© Copyright 1992, last revised January 1994 by

INDUSTRIAL ACOUSTICS COMPANY

SINCE 1949 — LEADERS IN NOISE CONTROL ENGINEERING, PRODUCTS AND SYSTEMS

UNITED STATES

1160 COMMERCE AVENUE
 BRONX, NEW YORK 10462-5599
 PHONE: (212) 931-8000
 FAX: (212) 863-1138

UNITED KINGDOM

CENTRAL TRADING ESTATE
 STAINES, MIDDLESEX, TW18 4XB
 PHONE: (0784) 456-251
 FAX: (0784) 463-303, TELEX: 25518

GERMANY

SOHLWEG 17
 D-41372 NIEDERKRÜCHTEN
 PHONE: (02163) 8431
 FAX: (02163) 80618

TECHNICAL REPRESENTATION IN PRINCIPAL CITIES THROUGHOUT THE WORLD

PRINTED IN USA