

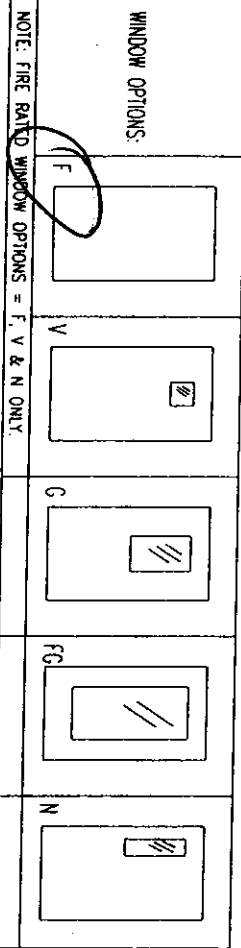
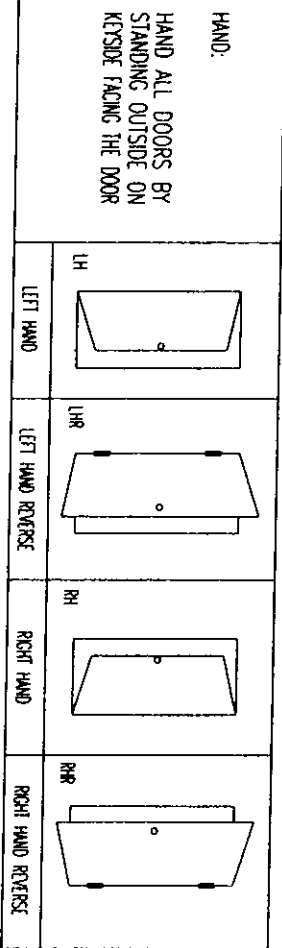
ELEVATION

DOOR SCHEDULE

DOOR NUMBER	QUANTITY	MATERIAL SEE BELOW	HAND/SWING SEE BELOW	WINDOW OPTION SEE BELOW	CLEAR OPENING WIDTH "W"	CLEAR OPENING HEIGHT "H"	ROUGH OPENING WIDTH	ROUGH OPENING HEIGHT	WALL THICKNESS	FRAME INSTALL ALTERNATE (SEE DWG 200)	HARDWARE SET	FIRE RATING SEE BELOW	REMARKS
1 G	1	F	36" 84"	35F 83"									ALL DIMENSIONS IN PARENTHESES ARE mm NOMINAL
1 G	1	F	36" 84"	41F 87"									* CAN-LIFT HINGES DUSTY/POUS MAGNETIC SEALS

MATERIAL OPTIONS: C = COLD ROLLED STEEL G = GALVANNEALD STEEL S1 = STAINLESS STEEL

FIRE RESISTANCE RATINGS: NR = NO RATING A = 3 HOUR 1SB = 1 1/2 HOUR B = 1 HOUR D = 20 MIN.



THIS DESIGN AND DRAWING IS THE EXCLUSIVE PROPERTY OF THE INDUSTRIAL ACOUSTICS COMPANY, INCORPORATED, AND IS SUBMITTED AS CONFIDENTIAL INFORMATION IN CONNECTION WITH A REQUEST FOR QUOTE. IT MUST NOT BE USED FOR ANY OTHER PROJECT WITHOUT THE WRITTEN PERMISSION OF THE COMPANY. IF YOU REQUEST IT MUST BE RETURNED IMMEDIATELY.

NOISE-LOCK DOORS	
S1C 51	SINGLE LEAF
	CAM LIFT
	SPLIT FRAME

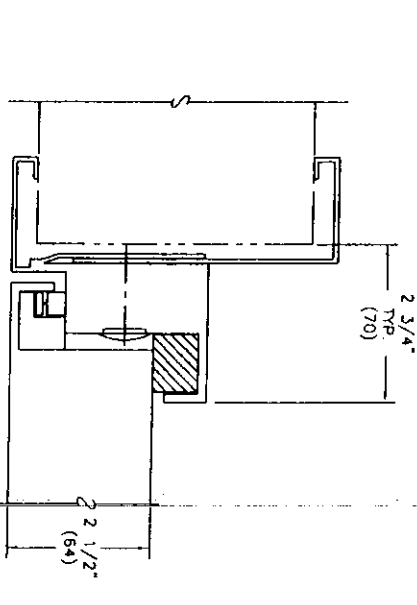
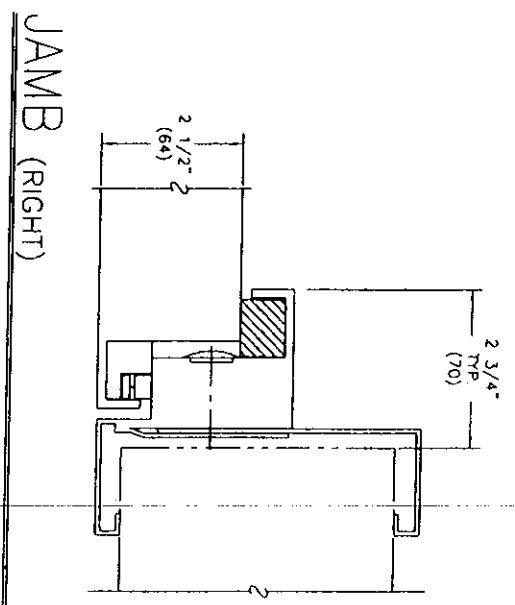
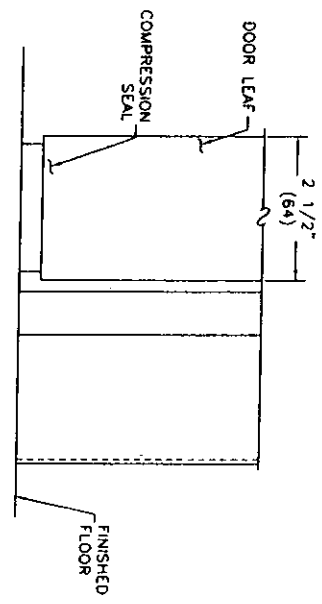
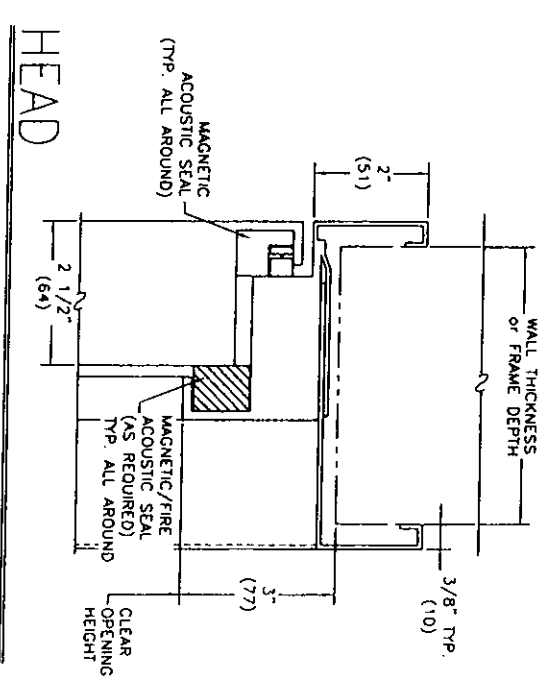
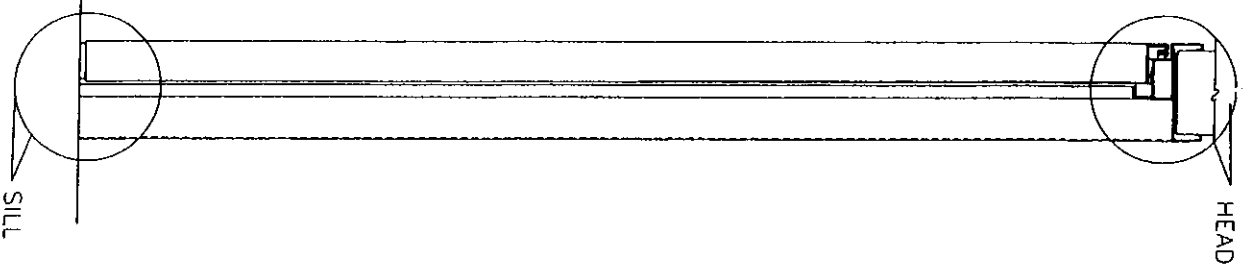
INDUSTRIAL ACOUSTICS COMPANY
1160 Commerce Avenue • Bronx, NY 10462

NOISE-LOCK ACOUSTIC DOORS

APPROVAL JOB NO. _____ DWG NO. _____

BY: _____ DATE: _____

ISSUE: _____



THIS DESIGN AND DRAWING IS THE EXCLUSIVE PROPERTY OF THE INDUSTRIAL ACOUSTICS COMPANY, INCORPORATED, AND IS SUBMITTED AS CONFIDENTIAL INFORMATION IN CONNECTION WITH YOUR INQUIRY. IT MUST NOT BE USED FOR ANY OTHER PURPOSES, NOR CAN IT BE COPIED OR LOANED WITHOUT WRITTEN PERMISSION. UPON REQUEST IT MUST BE RETURNED IMMEDIATELY.

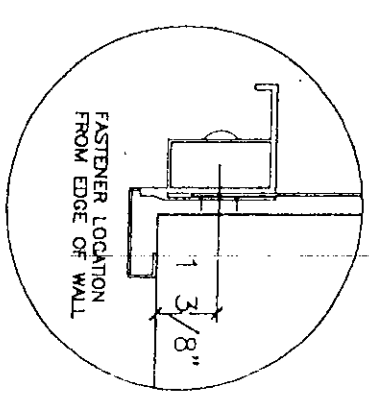
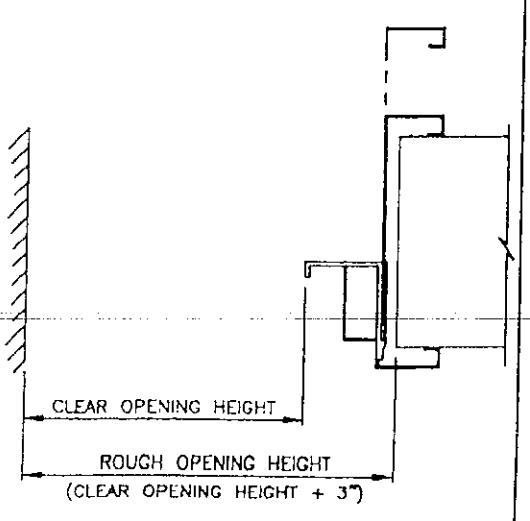
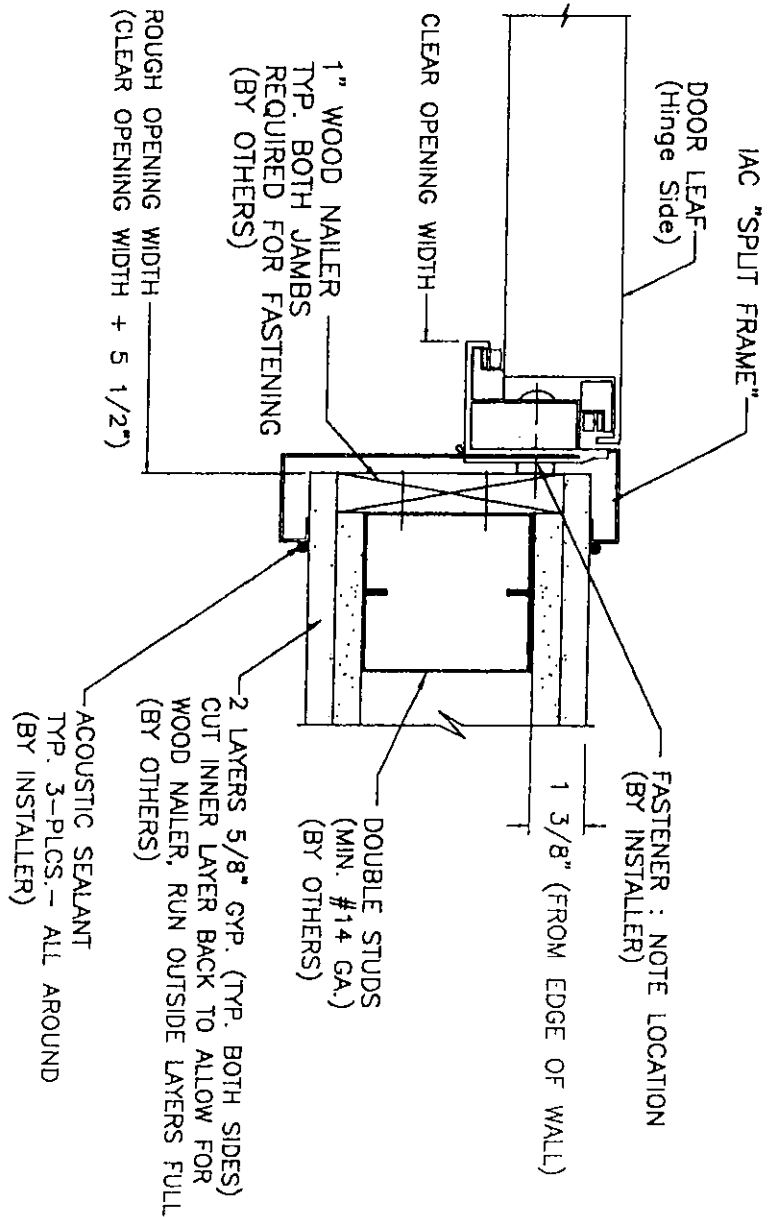


IAC STC 51 SINGLE LEAF NOISE-LOCK ACOUSTIC DOOR DETAILS

INDUSTRIAL ACOUSTICS COMPANY
1180 Commerce Avenue • Bronx, NY 10462

JOB No. _____ DRAWING No. _____

ISSUE	DATE	BY	DESCRIPTION OF ISSUE
A			



DOOR INSTALLATION REQUIREMENTS INSTALLATION ALTERNATE TYPE 1
 WALL CONSTRUCTION SHOWN AS EXAMPLE, FOR REFERENCE ONLY.

FRAME FASTENER MUST FASTEN INTO THE MAIN STRUCTURAL ELEMENT OF THE WALL OPENING, OR EQUAL TO MAINTAIN STABILITY.

ISSUE	A	DATE	BY	DESCRIPTION OF ISSUE	CHK	APPD
	12/1984		KAS	FOR REFERENCE & USE		

THIS DESIGN AND DRAWING IS THE EXCLUSIVE PROPERTY OF THE INDUSTRIAL ACOUSTICS COMPANY INCORPORATED AND IS SUBMITTED AS CONFIDENTIAL INFORMATION IN CONNECTION WITH THE INSTALLATION OF A DOOR. IT MUST NOT BE USED FOR ANY OTHER PURPOSES WITHOUT THE WRITTEN PERMISSION OF INDUSTRIAL ACOUSTICS COMPANY. IT MUST BE RETURNED IMMEDIATELY.

DOOR INSTALLATION
DETAILS

INDUSTRIAL ACOUSTICS COMPANY
1180 Commerce Avenue • Bronx, NY 10462

DESCRIPTION

FOR

JOB NO.	DRAWING NO.	ISSUE
		A